

Table of Contents

JAMS Overview	2
Working with Servers	3-4
The JAMS Client Interface	5
JAMS Scheduler Overview	6
Defining Folders and Jobs	7-10

JAMS Overview

What is JAMS?

The Job Access and Management System (JAMS) is designed to automate and enhance your organization's batch processing capabilities across multiple platforms. Windows, UNIX, Linux, System i, and more can be easily tied together using the JAMS enterprise scheduling engine.

Whether your organization's servers are virtualized or physical, uniform or diverse, JAMS provides secure control mechanisms that can enable you to submit batch processing jobs or alternatively create schedules for automatic execution.

JAMS is highly customizable and ready to provide benefits right out of the box. In addition, JAMS is scalable, allowing you to grow your business without worry that future upgrades will negate existing work or settings.

Once properly configured, JAMS will enhance and simplify the most complex batch scheduling processes, providing your organization with increased system reliability and reduced cost of operation.

JAMS Components

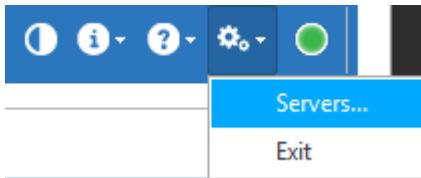
JAMS integrates three components that work together to create a unique and powerful management system.

1. **JAMS Client:** provides the main user controls for JAMS, available in either a Windows-based or Web-based GUI.
2. **JAMS Scheduler:** schedules all Jobs, Scripts, or Tasks that run on your organization's servers. It also monitors the status of all Jobs and communicates this information to the JAMS Client.
3. **JAMS Server:** the application service that facilitates communication between the JAMS Clients and the JAMS Scheduler.

Working with Servers

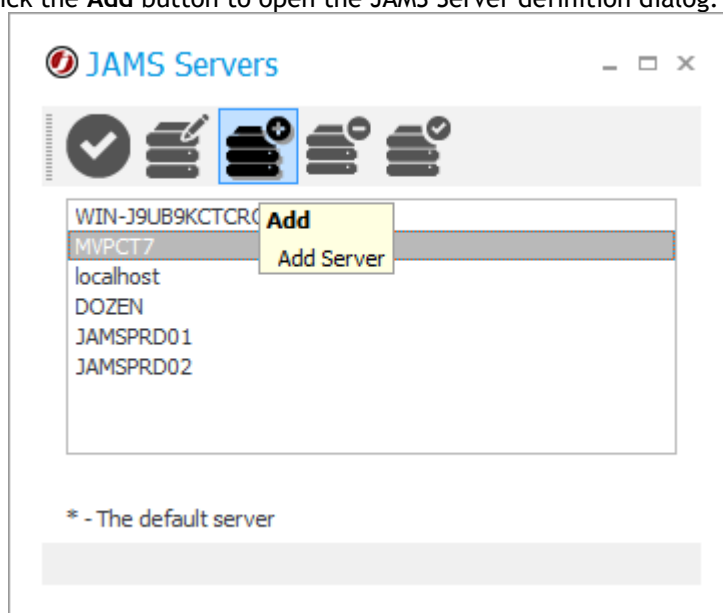
Every JAMS client must connect to at least one server. If the JAMS Server Service is installed on the same machine as the client, a server definition is automatically added that points to the local server.

Adding, removing, and editing JAMS Servers can be controlled from the Settings icon in the top right corner of the JAMS Client interface.

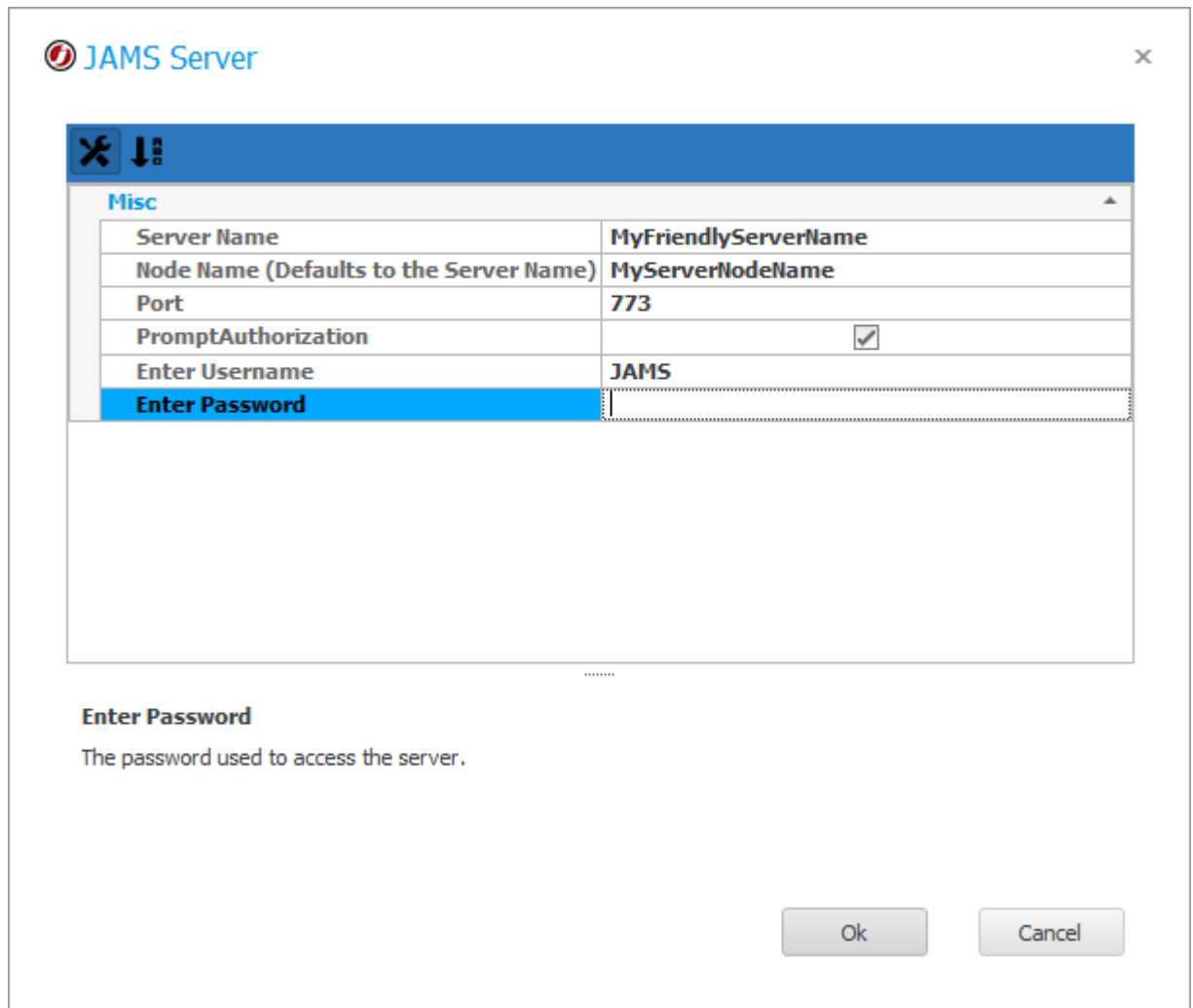


Adding a Server

1. Click the **Settings** icon in the top right corner and select the **Servers** command.
2. Click the **Add** button to open the JAMS Server definition dialog.



3. In the **Server Name** property, Define the name of the server as it will appear in JAMS.
4. Define the **Node Name** as the actual Windows Server name of the JAMS Server.
5. If required, modify the **Port** property.
6. Set whether JAMS should **Prompt for Authorization** when connecting to the Server
7. Define a **Username** and **Password** to connect to the JAMS Server.



8. Click the **OK** button.

Modifying the Server Properties

1. Click the **Settings** icon in the top right corner and select the **Servers** command.
2. Select the specific server from the list and click the **Edit** button.
3. Modify the properties as shown in the screenshot above.
4. Click the **OK** button.

Removing a Server

1. Click the **Settings** icon in the top right corner and select the **Servers** command.
2. Select the server from the list and click the **Delete** button
3. Confirm the settings and click **OK**.

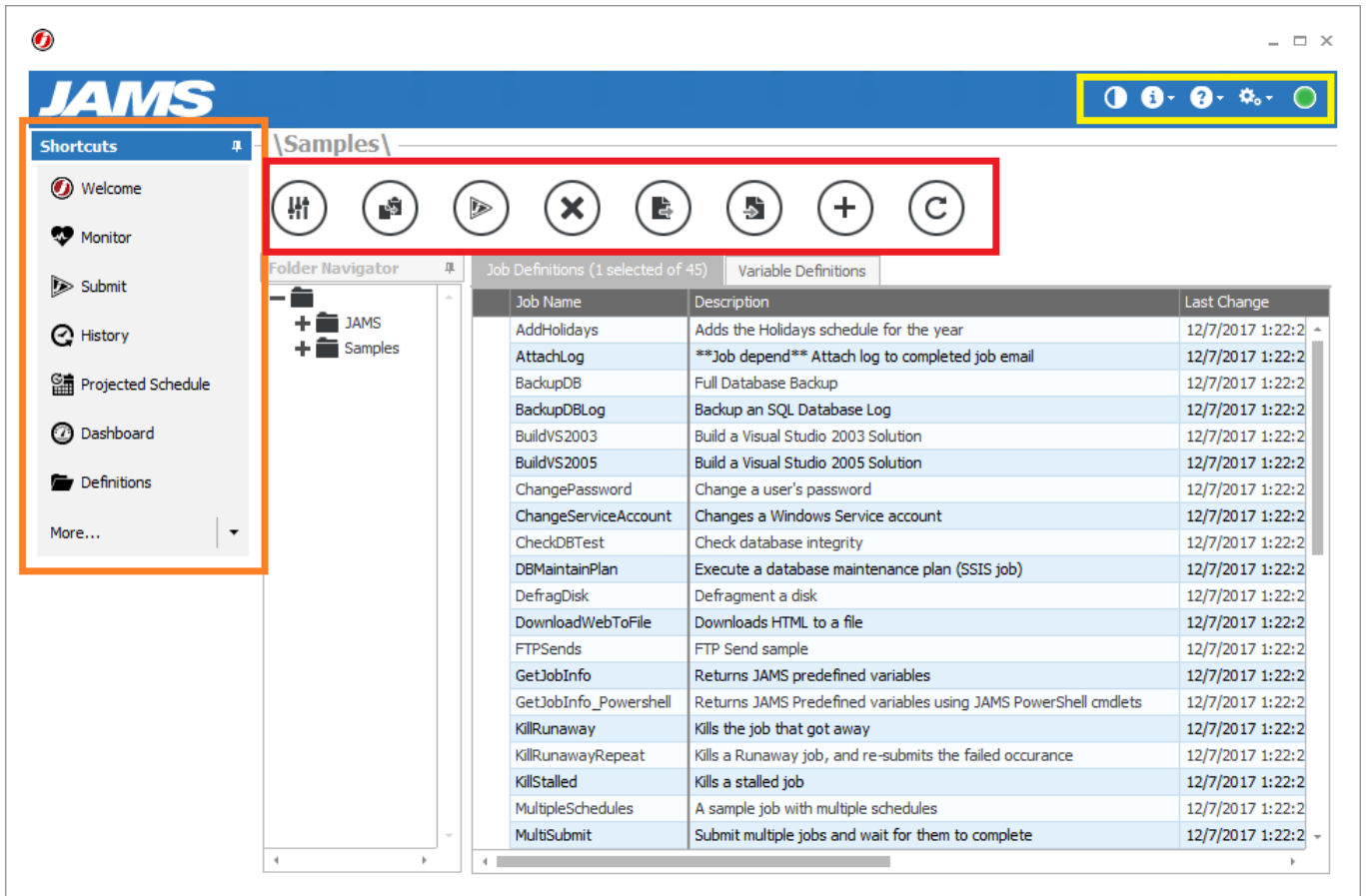
Setting a Default Server

1. Click the **Settings** icon in the top right corner and select the **Servers** command.
2. Select the specific server from the list and click the **Set Default** button.

The JAMS Client Interface

The JAMS Client is the primary user component in the JAMS system. Available as either a Windows or Web Application, the JAMS Client enables users to interact with the JAMS Scheduler and JAMS Database.

The JAMS Client has a sleek interface comprised of the configurable **Shortcuts** Menu (outlined in orange), a context-sensitive **Control Bar** (outlined in red), an informational bar (outlined in yellow), and a large central View area.



JAMS Scheduler Overview

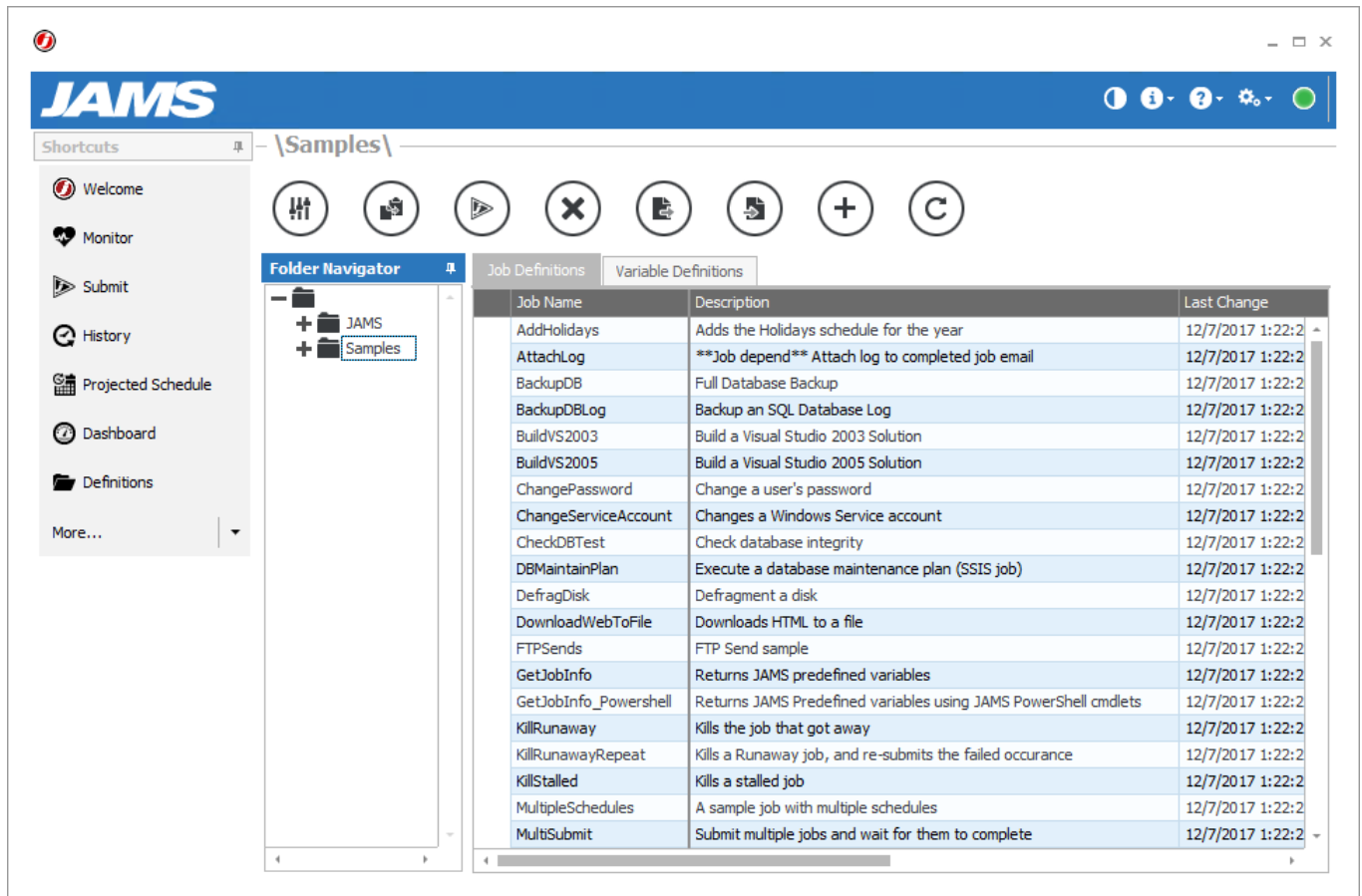
The Scheduler is the JAMS Component that schedules and monitors the status for all Jobs.

A JAMS Scheduler can run on any number of computer systems on your network and can be configured in a centralized or decentralized manner. For example, a single JAMS Scheduler can execute tasks on many systems utilizing the power of JAMS Agents.

Alternatively, to distribute the management of tasks and eliminate single points of failure, you can choose to run multiple JAMS Schedulers each residing on a different machine. Dependencies can be defined between multiple instances of JAMS Schedulers to provide enterprise-wide control.

Defining Folders and Jobs

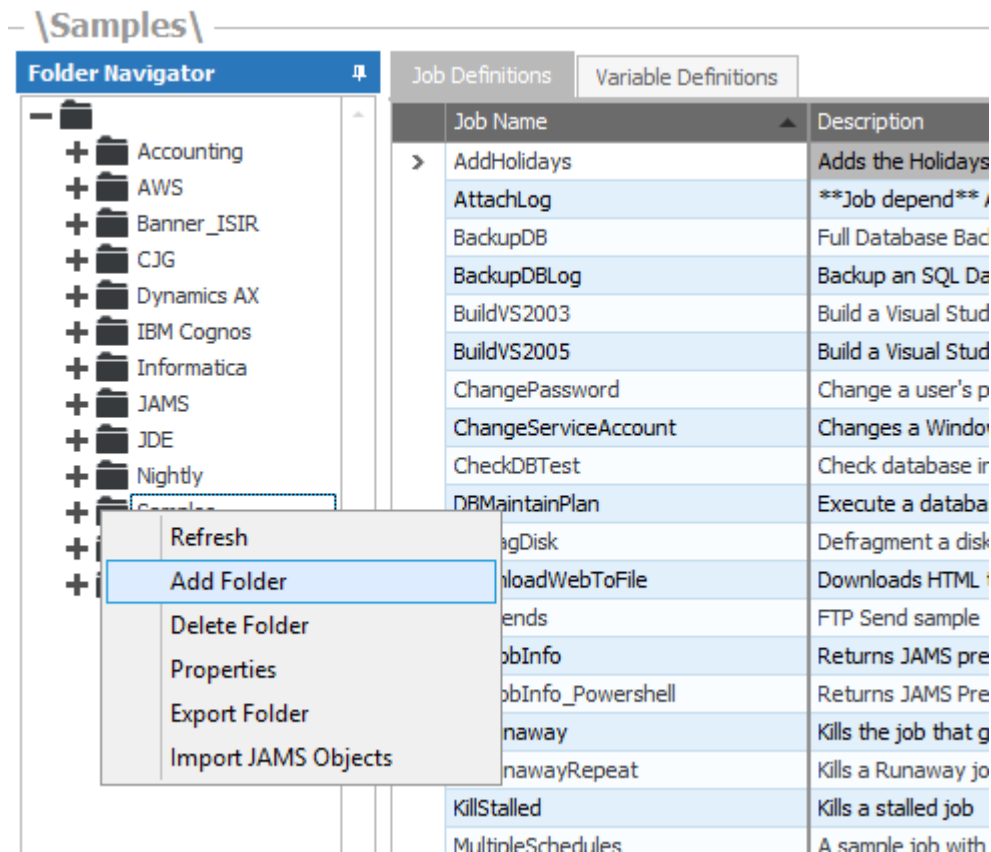
Folders and Jobs, available from the Definitions shortcut, are basic objects used to organize and define batch processing in your environment.



Folder Definition

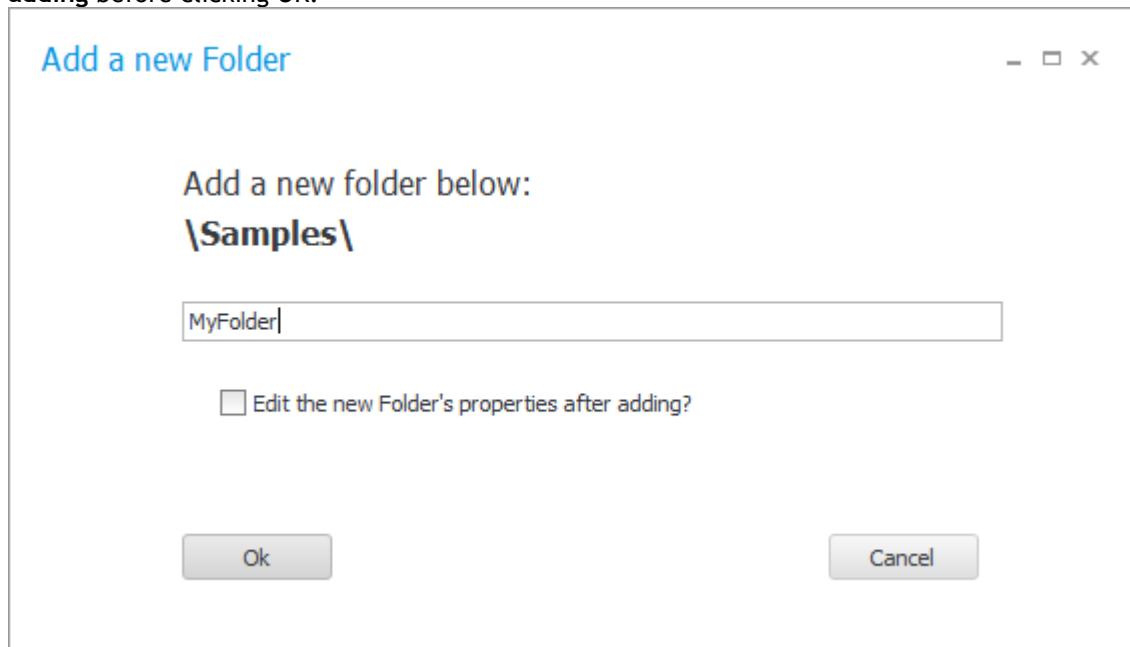
A Folder contains a logical grouping of Jobs. Folders can be organized by department (e.g., Accounting, IS, Sales) by function (e.g., EDI, Web, Security, Audit) or any other way that is meaningful to your organization.

1. To create a new Folder, **Right-Click** the desired parent folder in the Folder Navigator and choose the **Add Folder** command from the popup menu.



2. This action opens the *Add a New Folder* dialog. Give the new Folder a **Name**, then click **OK** to create the Folder.

NOTE: To quickly open the full *Folder Definition* dialog, check **Edit the new Folder's properties after adding** before clicking **OK**.



3. **Right-click** on any existing folder and select **Properties** from the drop-down list to open the full *Folder Definition* dialog. In this full definition dialog, users may define a number of Properties, Elements, Parameters, and Security controls on the Folder.
4. **Save and Close** the *Folder Definition* dialog.

Job Definition

A Job is a task, script (known as a command procedure), command, sequence, or Workflow. A JAMS Job includes a number of Soft Properties and Elements that modify how and when a Job should run, as well as actions that

should be taken when the Job finishes.

NOTE: If your organization uses command procedures for batch processing you can continue to deploy them using JAMS.

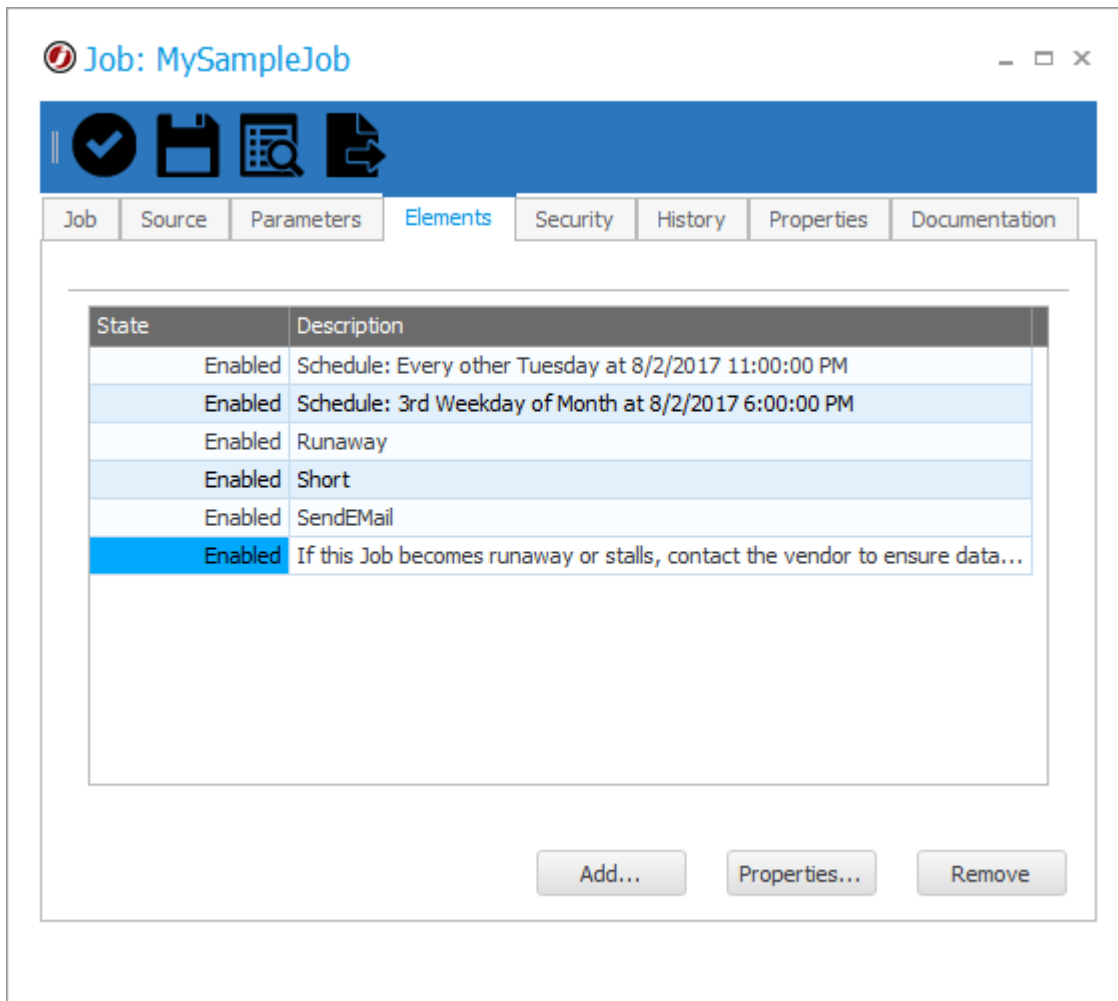
1. To create a new Job, open the **Definitions** view from the Shortcut bar, then select the **Job Definitions** tab.
2. Click the **Add** button in the *Control Bar* to open the *Add a New JAMS Job Definition* dialog.
3. In the dialog, select the **Folder** where the Job should be created.
4. Define a **Name** for the new Job.
5. If desired, give the Job a **Description**.
6. Select an **Execution Method** for the Job from the drop-down list.

Folder	\Samples\MyFolder
Name	MySampleJob
Description	A description for my Sample Job
Execution Method	PowerShell
Edit this Job definition After Adding	<input checked="" type="checkbox"/>

Execution Method
Identifies the execution method used to execute this job.

Ok Cancel

7. By default, the full *Job Definition* dialog will open when the Job is initially saved. Click **OK**.
8. The *Job Definition* dialog will open.
9. Define the Job's Source, Elements, Parameters, Security, Properties, and Documentation as desired.



10. When the Job has been configured as desired, click **Save and Close**.

NOTE: A Job in JAMS must have an Execute As user in order to run. To set an Execute As user, add and define the Execute As property to the relevant Job or Folder.